



Organization Chart 2016-2017

Governing Council
Cultivate Public Waldorf Education

7 Voting Members
Community Member
Parent
Parent
Parent
Parent or Community Member
Parent or Community Member

President: Jeff Wilhite
Vice President: Nicole Dominic
Treasurer: Rich Peters
Secretary: Gina Schley
Member at Large: Don Toups
Member at Large: Sarah Landreth
Member at Large: Reina Bach

Key

Purple: Volunteers
Orange: Salaried Employee
Red: Hourly Employees
Blue: Contractual Services

Faculty Council
Cultivate Academic Excellence
All Faculty Voting Members

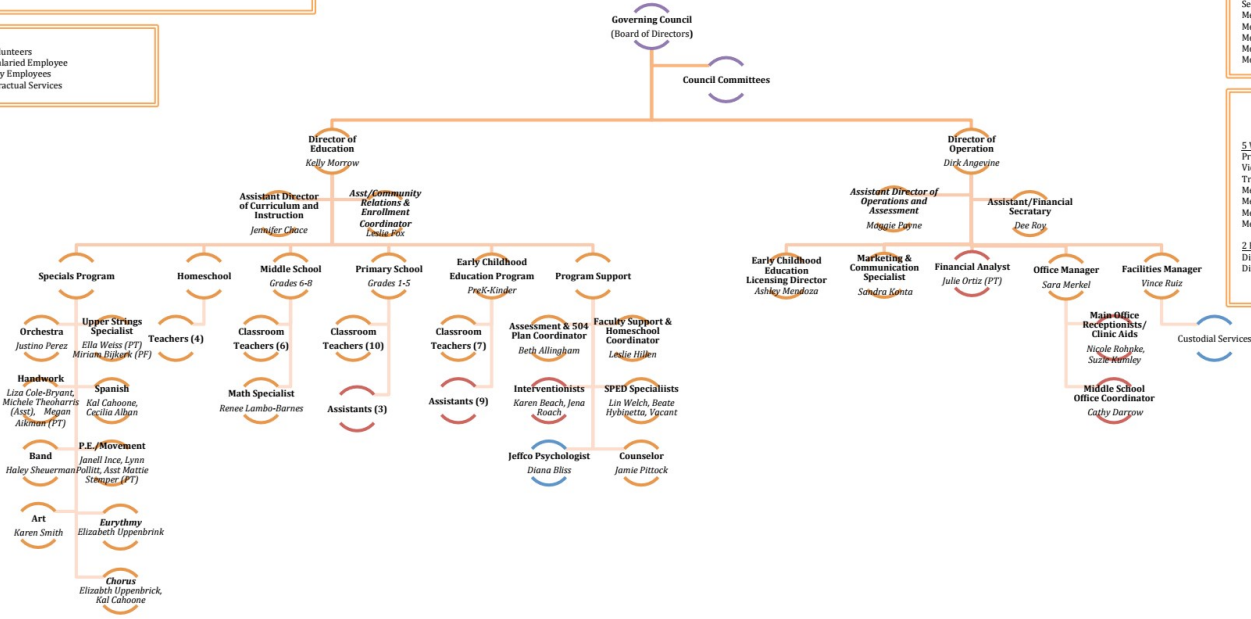
Parent Council
Cultivate Community

9 Voting Members
President: Monica Benway
Vice President: Monica Lloyd
Treasurer: Dan Dial
Secretary: Ada Thomas
Member at Large: Nicole Cook
Member at Large: Sarah Spica
Member at Large: Amy Pardue
Member at Large: Leah Hickler
Member at Large: Molly Johnson

Foundation
Cultivate Philanthropy

5 Voting Members
President: John Kallensbach
Vice President: Carla Mead
Treasurer: Tammy Avander
Member at Large: Ruth Troude
Member at Large: Heather Lee
Member at Large: Dan Dial
Member at Large: Jeff Wilhite

2 Ex-officio Members
Director of Education: Kelly Morrow
Director of Operations: Dirk Angevine



Revisions approved by the Governing Council on August 24, 2016.



HISTORY

Original: Approved by Governing Council June 2014.
 Revisions on August 24, 2016 – Positions added were Assistant Director of Curriculum and Instruction, Assistant Director of Operations/Assessments, Chorus, Eurythmy, 2nd grade assistant, and another part time Clinic Aid, a second part time String Specialist, and a 2nd part time handwork assistant. The Community Relations & Enrollment Coordinator changed from reporting to the DO to the DE and additional administrative assistant responsibilities were added to the job. Both the Marketing & Communication Specialist and the Community Relations & Enrollment Coordinator positions moved from part time positions to full time positions. Several positions were updated with new employee names. The Director of Education and Director of Operations were both added as Ex-officio members of the Foundation. All Governing Council, Foundation, and Parent Council board member names were updated.

Revisions approved by the Governing Council on August 24, 2016.